

TERA Image

THz Imaging Extension for Menlo Systems THz-TDS Systems

MenloSystems

HIGHLIGHTS

- **ImageLab:** Powerful Software for Image Analysis Included

KEY SPECIFICATIONS

- Scan Range: 150 mm x 150 mm
- Resolution x-direction: <500 μ m
- Resolution y-direction: <500 μ m

FEATURES

- Automated Image Scanning
- Image Reconstruction
- Hyperspectral Image Analysis

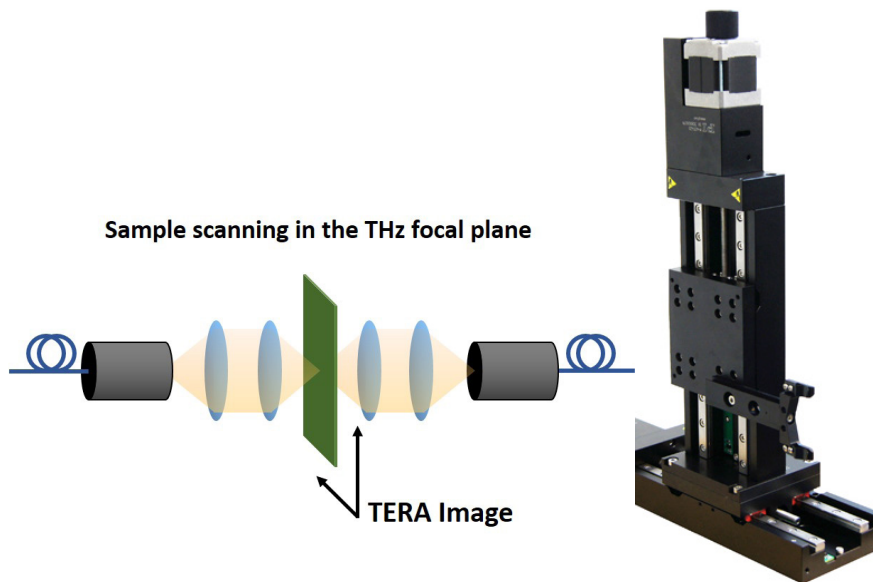
APPLICATIONS

- Non-destructive material testing
- Food quality control
- Biological sample investigation
- Medical imaging

OPTIONS

- **ImageLab** Extenden Edition

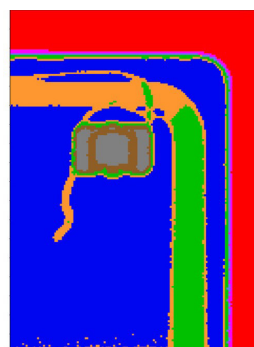
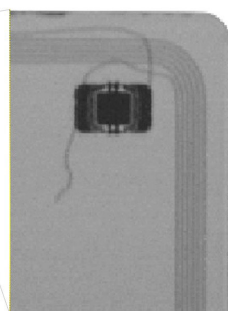
4D data modelling
ImageLab script automation
Multisensor support
and more ...



Menlo Systems' TERA Image is an automated imaging unit which can be upgraded to our THz time-domain spectroscopy systems. It enables the user to acquire THz images in transmission or reflection geometry. The measurement sample is mounted onto the unit and placed into the focal plane of the THz path. The image data then consists of a matrix containing the entire spectral information for each data pixel of the scanned X-Y-plane, with a total range of 150 mm x 150 mm or even larger.

The real strength of TERA Image lies in the analysis and visualization of the image data. It uses EPINA's ImageLab software for image reconstruction and analysis, with various functions for data processing, classification, or merging with maps of physical properties. With this unique tool the TERA Image is a powerful THz imaging system for a large variety of applications.

CASE STUDY Antenna and chip structure in a key card



TERA Image

THz Imaging Extension



SPECIFICATIONS

Travel range	150 mm x 150 mm (ask us for longer ranges)	
Resolution x-direction	<500 μm^* (stage resolution <100 μm)	
Resolution y-direction	<500 μm^* (stage resolution <100 μm)	
Travel speed	TERA K15	up to 20 data pixels/second
	TeraSmart	
	TERA ASOPS	up to 100 data pixels/second (ask for fast imaging option!)
	TERA OSCAT	

*image resolution is limited by the size of the THz focal diameter

DIMENSIONS AND WEIGHT

Width x Height	380 mm x 430 mm
Weight	8 kg

SYSTEM COMPONENTS

	XY-scanning unit with controllers
	LabView-based measurement software
	EPINA ImageLab software for image reconstruction and analysis

ORDERING INFORMATION

Product Code	TERA Image
--------------	------------

Please call for pricing. Specifications are subject to change without notice.



Menlo Systems GmbH
T+49 89 189 166 0
sales@menlosystems.com

Menlo Systems, Inc.
T+1 973 300 4490
ussales@menlosystems.com

Thorlabs, Inc.
T+1 973 579 7227
sales@thorlabs.com

