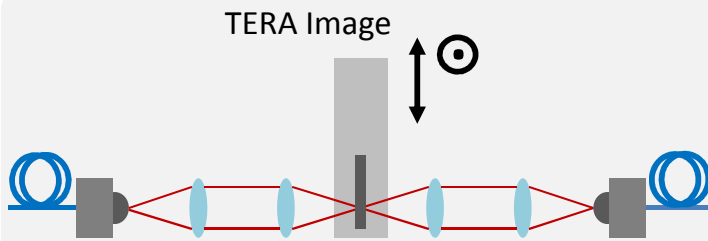


Extension unit available for TERA K8, TERA K15, and TERA OSCAT, enabling fully automated THz imaging in transmission geometry.

Includes XY scanner with 100 x 100 mm² scan range and software package for image reconstruction.

The measurement software is LabView based.

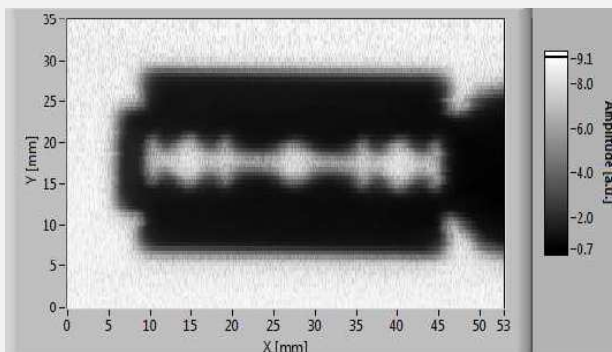


Terahertz beam path with sample in focus

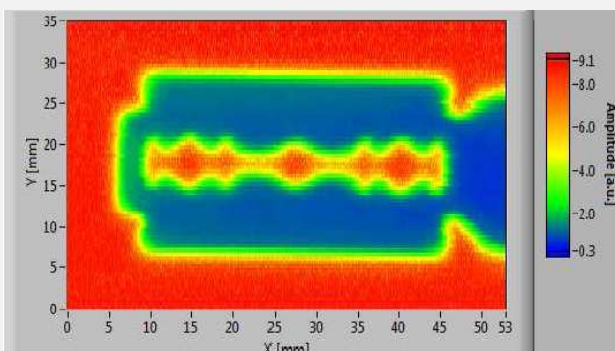
Metal sample:



Transmission pattern (grey scale):



Transmission pattern (color scale):



Applications:

- Non-destructive material investigation
- Food quality control
- Biological sample investigation
- Medical imaging
- Homeland security

resolution x-direction 500 μm

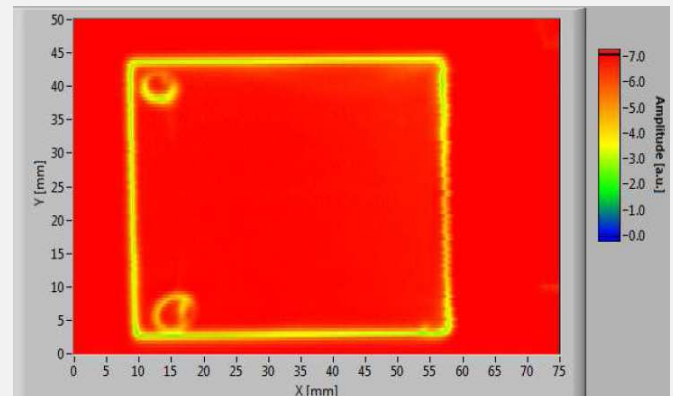
resolution y-direction 500 μm

typ. measuring time TERA K8/K15: 2.5 h
(full range) TERA OSCAT: 15 min

Plastic wedge:



Peak-to-peak measurement:



Temporal profile of the THz-pulse maximum:

